

Rabbeting Cutter Heads



694.100

These cutter heads have been designed for:

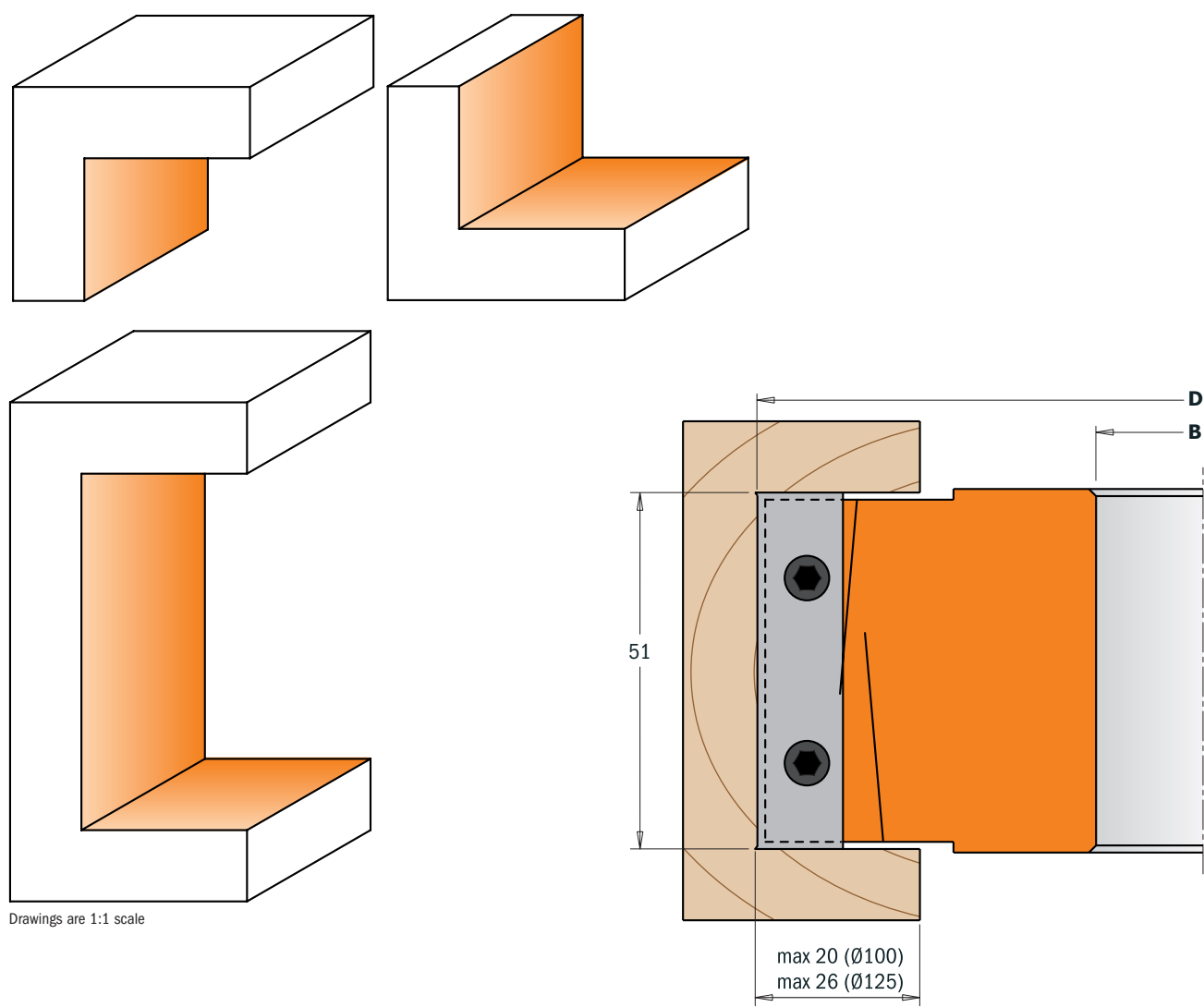
- rabbeting from top and from bottom
- jointing
- grooving

For use on spindle moulder machines, double-end tenoner and edging machines. Perfect on all materials, but better results are achieved using chipboard, MDF, wood composites, plastic materials and laminates. Improved design with shear angle.

TECHNICAL DETAILS:

- Hard aluminium alloy body with high resistance to tensile and yield stress.
- 2 universal HWM straight knives 50x12x1,5mm [Z2].
- 4 universal HWM scoring knives 14x14x2mm [V4].
- Tools for manual feed (MAN).
- Pins for automatic positioning of the knives.

Supplied in a solid plastic box.



Drawings are 1:1 scale

D mm	B mm	l mm	Z	RPM	ORDER NO.	Spare parts						
100	19,05	51	2+4	7500~12500	694.100.19							
100	30	51	2+4	7500~12500	694.100.30	790.140.00	990.093.00	991.073.00	790.500.00	695.999.46	990.064.00	991.064.00
100	31,75	51	2+4	7500~12500	694.100.31	790.140.00	990.093.00	991.073.00	790.500.00	695.999.46	990.064.00	991.064.00
100	35	51	2+4	7500~12500	694.100.35	790.140.00	990.093.00	991.073.00	790.500.00	695.999.46	990.064.00	991.064.00
125	40	51	2+4	6100~10000	694.125.40	790.140.00	990.093.00	991.073.00	790.500.00	695.999.46	990.064.00	991.064.00
125	50	51	2+4	6100~10000	694.125.50	790.140.00	990.093.00	991.073.00	790.500.00	695.999.46	990.064.00	991.064.00

Cutter Heads for Rabbeting and 40mm Profile Knives



694.020

- These cutter heads have been designed for:
- rabbeting from top and from bottom
 - jointing
 - grooving
 - 40mm SP profile knives

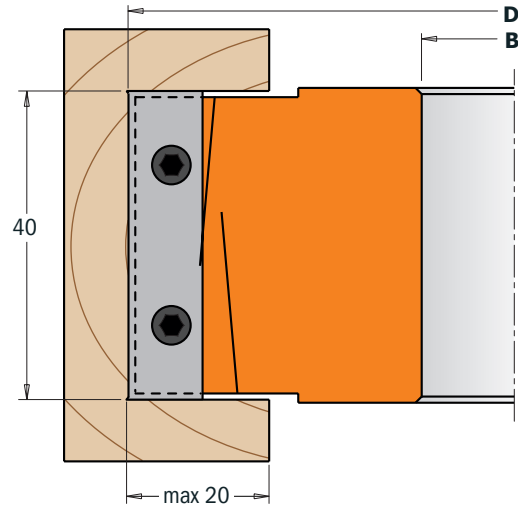
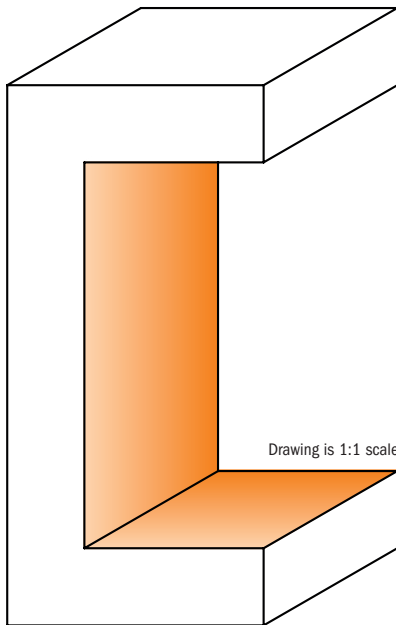
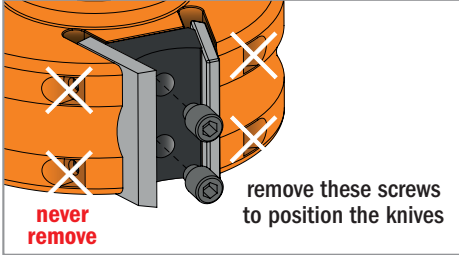
For use on spindle moulder machines, double-end tenoners and edging machines. Perfect on all materials, but better results are achieved on chipboard, MDF, wood composites, plastic materials and laminates.



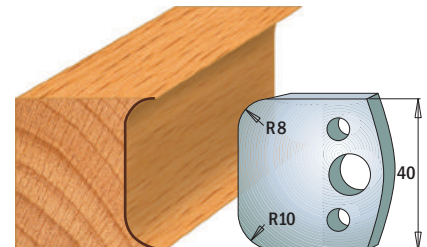
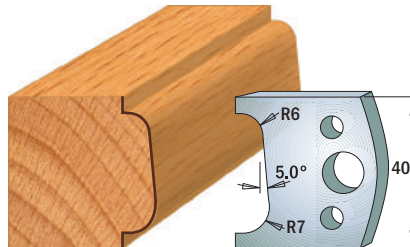
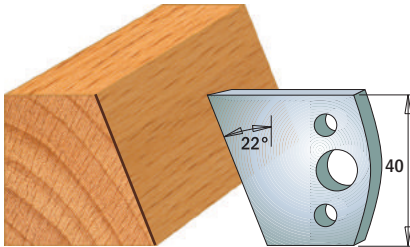
TECHNICAL DETAILS:

- Hard aluminium alloy body with high resistance to tensile and yield stress.
- 2 universal HWM straight knives 40x12x1,5mm [Z2].
- 2 universal HWM scoring knives 14x14x2mm [V2].
- Tools for manual feed (MAN).
- Pins for the automatic positioning of the knives.

Supplied in a solid plastic box.



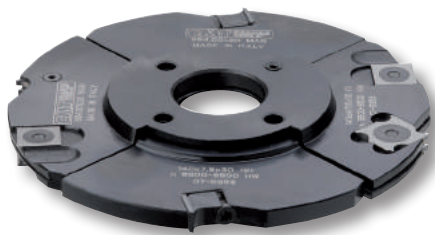
To use with all 40mm profile knives
(see from page 96 to page 105)



D mm	B mm	I mm	Z	RPM	ORDER NO.	Spare parts						
100	30	40	2+2	7500~12500	694.020.30							
100	31,75	40	2+2	7500~12500	694.020.31	790.140.00	990.093.00	991.073.00	790.400.00	693.999.01	990.065.00	991.064.00
125	35	40	2+2	7500~12500	694.020.35	790.140.00	990.093.00	991.073.00	790.400.00	693.999.01	990.065.00	991.064.00
125	40	40	2+2	7500~12500	694.020.40	790.140.00	990.093.00	991.073.00	790.400.00	693.999.01	990.065.00	991.064.00
125	50	40	2+2	7500~12500	694.020.50	790.140.00	990.093.00	991.073.00	790.400.00	693.999.01	990.065.00	991.064.00

Spare parts
 691.192 Pair of limiters 40x4mm
 695.020.01 Indexable knife edge block 38x4x15mm

3 piece Adjustable Grooving Sets



694.001

These cutter heads are the ideal tools to create precision slots and grooves on material 4 to 15mm deep. These sets include:

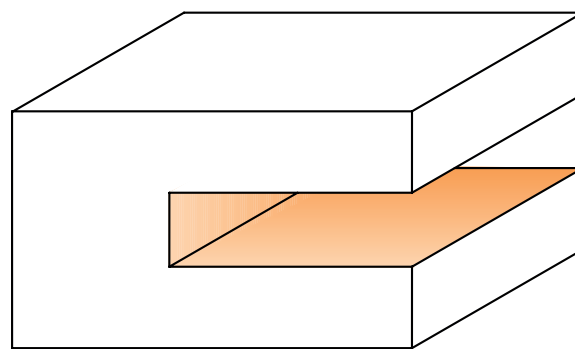
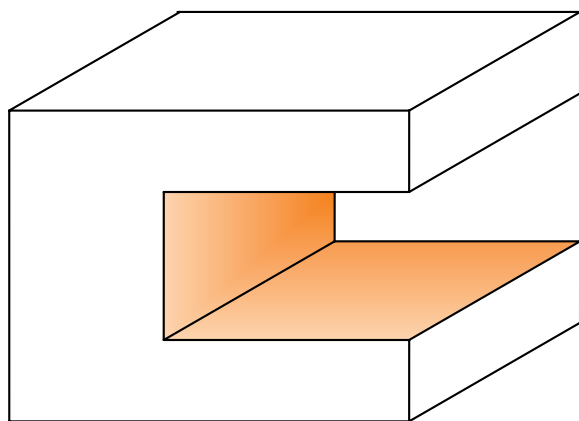
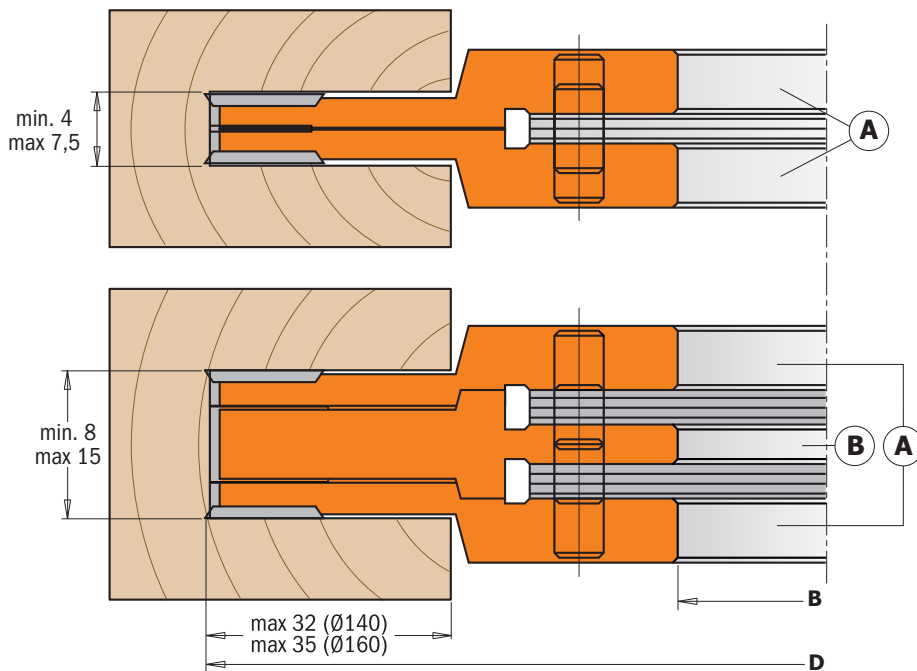
- 2 cutter heads type (A) [Z4 + V4]
- 1 cutter head type (B) [Z2]
- 12 spacer rings from 0,1 to 2mm

For use on your spindle moulder machines, double-end tenoner and shaper machines. Perfect grooving on all materials, but ideal on solid wood, plywood and laminated panels.

TECHNICAL DETAILS:

- Super-strength steel body.
- 2 HWM Knives 7,65x12x1,5mm [Z2].
- 4 HWM Knives 18x18x1,5mm [Z4].
- 4 HWM Knives 14x14x1,2mm [V4].
- Tools for manual feed (MAN).
- Pins for automatic positioning of the knives.

Supplied in a solid plastic box.



Drawings are 1:1 scale

D mm	B mm	Z + V	RPM	ORDER NO.	Spare parts			
140	30	4+4	5500~9500	694.001.30				
140	30	4+4	5500~9500	694.001.30	790.181.00	790.140.10	790.076.00	695.998.21
140	31,75	4+4	5500~9500	694.001.31	790.181.00	790.140.10	790.076.00	695.998.22
140	35	4+4	5500~9500	694.001.35	790.181.00	790.140.10	790.076.00	695.998.23
160	40	4+4	4800~8300	694.001.40	790.181.00	790.140.10	790.076.00	695.998.24N
160	50	4+4	4800~8300	694.001.50	790.181.00	790.140.10	790.076.00	695.998.25N

Spare parts

For cutter heads (A)

- 990.079.00 M4x3,2mm Torx screws
- 991.069.00 T9 Torx key
- 695.996.02 M4 (Ø12x1,7mm) threaded ring
- 695.996.01 M4 (Ø10x1,6mm) threaded ring

For cutter heads (B)

- 695.999.07 7x11x9,5mm wedge for knives
- 990.063.00 M5x18mm screw
- 991.072.00 T20 Torx key

2 Piece Adjustable Grooving Sets



694.021 - 694.022



These cutter heads are the ideal tools to create precision slots and grooves on material from 14 to 39mm deep. These sets include:

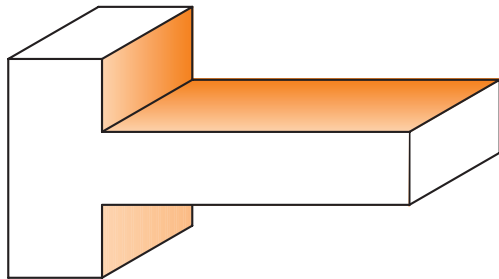
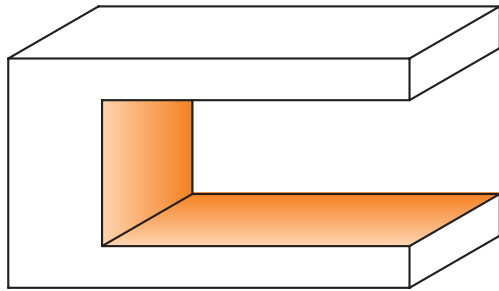
- 1 cutter head type (A) [Z2 + V2]
- 1 cutter head type (B) [Z2 + V2]
- spacer rings set

For use on spindle moulder machines, double-end tenoners and shaper machines. Perfect grooving on all materials, but ideal on solid wood, plywood and laminated panels.

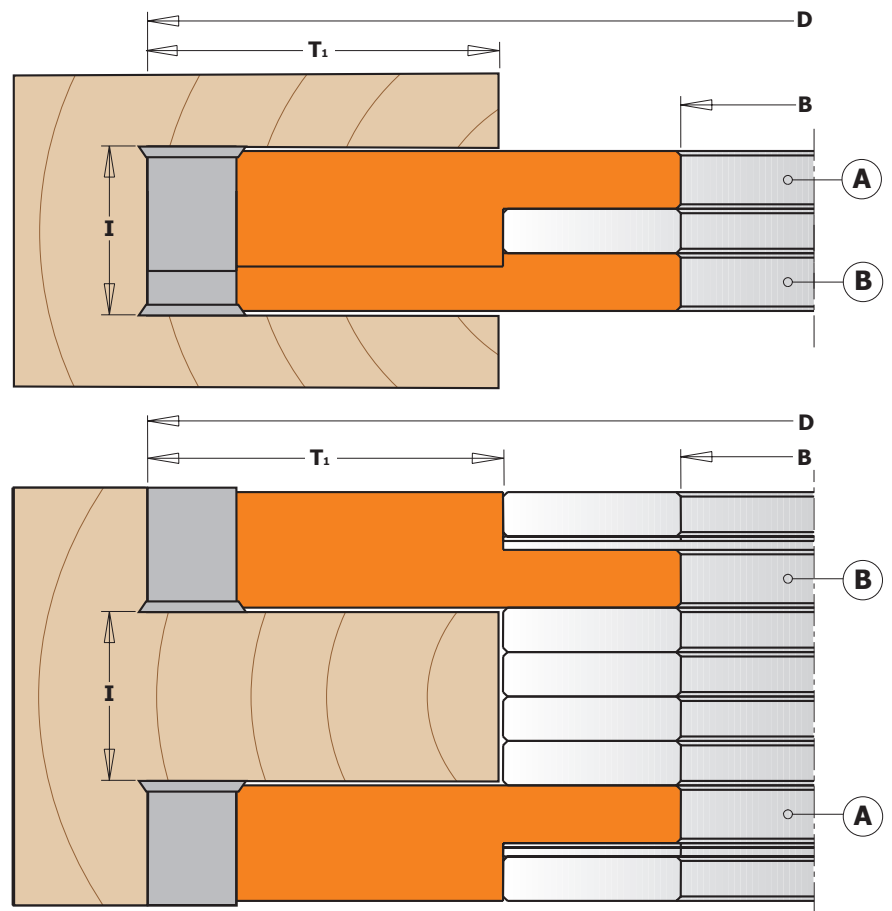
TECHNICAL DETAILS:

- Super-strength hard aluminium alloy body.
- 694.021: 8 HWM Knives 13,6x13,6x2mm.
- 694.022: 8 HWM Knives 19,5x12x1,5mm.
- 4 HWM Scoring knives 14x14x2mm.
- Tools for manual feed (MAN).
- Pins for the automatic positioning of the knives.

Supplied in a solid plastic box.



Drawings are 1:1 scale



D mm	I mm	B mm	T1 mm	Z	RPM	ORDER NO.	Spare parts									
150	14-28	30	59	4+4	5000~8000	694.021.30						790.136.00	990.093.00	695.998.41		
150	14-28	31,75	44	4+4	5000~8000	694.021.31						790.136.00	990.093.00	695.998.42		
150	14-28	35	44	4+4	5000~8000	694.021.35						790.136.00	990.093.00	695.998.43		
150	14-28	40	44	4+4	5000~8000	694.021.40						790.136.00	990.093.00	695.998.44		
160	14-28	50	44	4+4	5000~8000	694.021.50						790.136.00	990.093.00	695.998.45		
170	20-39	30	54	4+4	4400~7400	694.022.30						790.140.00	990.093.00	790.195.12	990.094.00	695.998.46
170	20-39	31,75	54	4+4	4400~7400	694.022.31						790.140.00	990.093.00	790.195.12	990.094.00	695.998.47
170	20-39	35	54	4+4	4400~7400	694.022.35						790.140.00	990.093.00	790.195.12	990.094.00	695.998.48
170	20-39	40	54	4+4	4400~7400	694.022.40						790.140.00	990.093.00	790.195.12	990.094.00	695.998.49
170	20-39	50	59	4+4	4400~7400	694.022.50						790.140.00	990.093.00	790.195.12	990.094.00	695.998.50

Spare parts
 991.072.00 T20 Torx key
 991.073.00 T25 Torx key

Planing & Jointing Spiral Cutter Heads



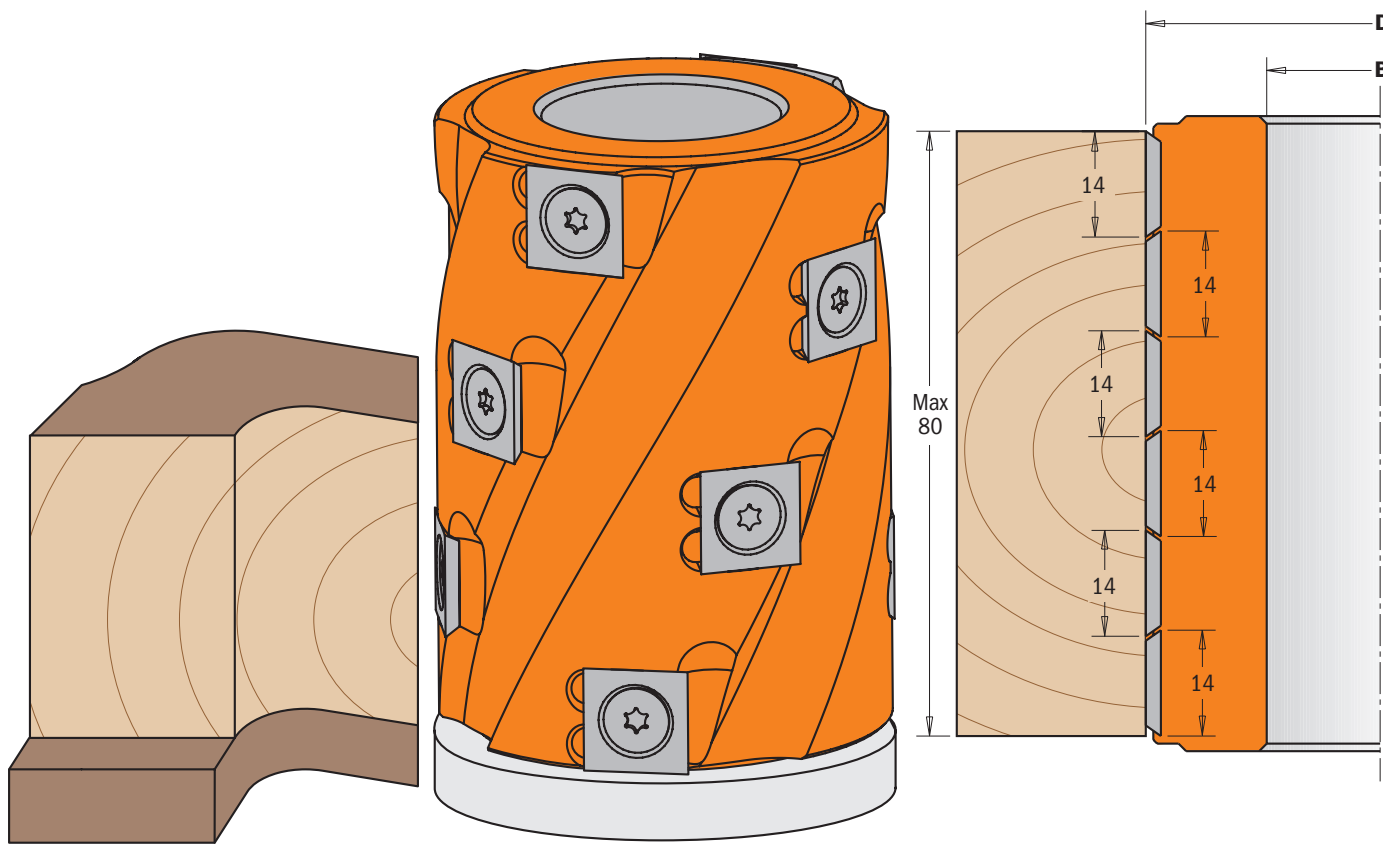
694.019

These new cutter heads have been designed for planing and jointing on soft or hard wood and wooden boards on spindle moulder machines. Ideal for routing our curved elements by using a bearing guide (sold separately) and a template.

TECHNICAL DETAILS:

- Hard aluminium alloy body with high resistance to tensile and yield stress.
- 12 HWM Knives 14x14x2mm [Z2] with 4 spiral indexing.
- Tools for manual feed (MAN).

Supplied in a plastic twistpack.



Optional bearing

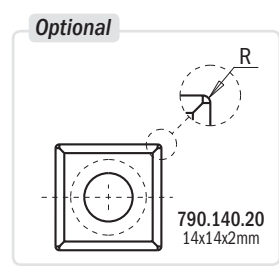
Spare parts

790.140.00	990.093.00	991.073.00
790.140.00	990.093.00	991.073.00
790.140.00	990.093.00	991.073.00
790.140.00	990.093.00	991.073.00

D mm	I mm	B mm	Z	RPM	ORDER NO.
62	80	30	12	8000~12000	694.019.30
62	80	35	12	8000~12000	694.019.35
80	80	40	12	8000~12000	694.019.40
80	80	50	12	8000~12000	694.019.50

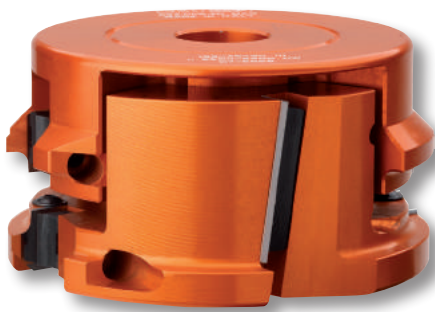
Optional

791.051.00	30x62x16mm bearing
791.052.00	35x62x14mm bearing
791.054.00	40x80x18mm bearing
791.053.00	50x80x16mm bearing



Note: Ideal for routing out curved elements by using an bearing guide (sold separately) and a template. In order to achieve an extra-fine finish, you can order the optional knife 790.140.20.

2 Piece Adjustable Rounding & Chamfering Sets



694.005

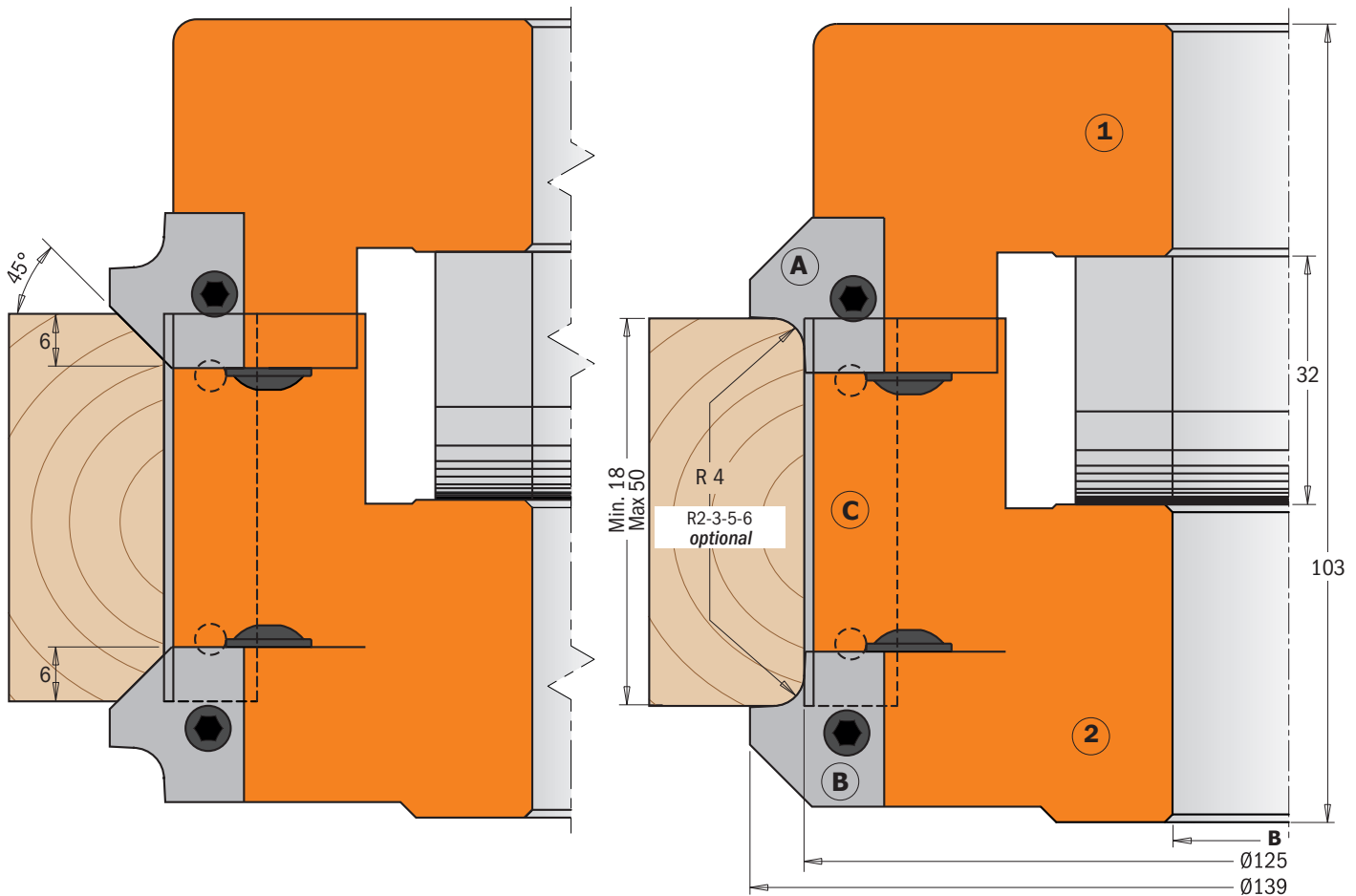


Innovative design, simple assembly and numerous possibilities. The CMT adjustable rounding and chamfering sets consist of two pieces, which are very easy to set up on your spindle moulder machine, allowing you to profile on solid wood and man-made boards (with or without coating). It supports five different knives for rounding over both top and bottom edges in one single pass with radius 2,3,4,5 or 6mm, and for 45° chamfering on material from 18mm to 50mm thick. The improved design with shear angle guarantees perfect finishing! For use on spindle moulder machines and double-end tenoners.

TECHNICAL DETAILS:

- Hard aluminium alloy body with high resistance to tensile and yield stress.
- One pair of HWM top knives radius 4mm and 45° chamfer (20x20,5x2mm) [Z2].
- One pair of HWM bottom knives radius 4mm and 45° chamfer (20x20,5x2mm) [Z2].
- Two HWM knives 50x12x1,5mm.
- Set of 21 spacer rings from 0,1 to 3mm.
- Tools for manual feed (MAN).
- Pins for the automatic positioning of the knives.

Supplied in a solid plastic box.



D mm	B mm	Z	RPM	ORDER NO.
139	30	2+2	5500~9400	694.005.30
139	31,75	2+2	5500~9400	694.005.31
139	35	2+2	5500~9400	694.005.35
139	40	2+2	5500~9400	694.005.40
139	50	2+2	5500~9400	694.005.50

Spare parts

17x11x9,5mm	46x11x9,5mm	990.064.00	695.998.11
695.999.17	695.999.46	990.064.00	695.998.11
695.999.17	695.999.46	990.064.00	695.998.12
695.999.17	695.999.46	990.064.00	695.998.13
695.999.17	695.999.46	990.064.00	695.998.14
695.999.17	695.999.46	990.064.00	695.998.15

Spare parts

695.005.A4	R=4+45° pair of knives for roundover/chamfer (top)
695.005.B4	R=4+45° pair of knives for roundover/chamfer (bottom)
790.500.00	50x12x1,5mm knives
991.064.00	4mm hex key
991.067.00	3mm hex key

Optional

695.005.A2	R=2+45° pair of knives for roundover/chamfer (top)
695.005.A3	R=3+45° pair of knives for roundover/chamfer (top)
695.005.A5	R=5+45° pair of knives for roundover/chamfer (top)
695.005.A6	R=6+45° pair of knives for roundover/chamfer (top)
695.005.B2	R=2+45° pair of knives for roundover/chamfer (bottom)
695.005.B3	R=3+45° pair of knives for roundover/chamfer (bottom)
695.005.B5	R=5+45° pair of knives for roundover/chamfer (bottom)
695.005.B6	R=6+45° pair of knives for roundover/chamfer (bottom)

45° Chamfer Cutter Heads



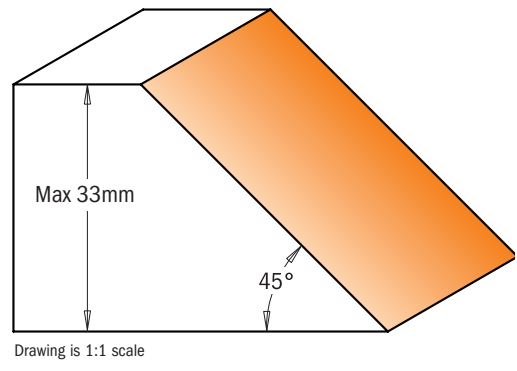
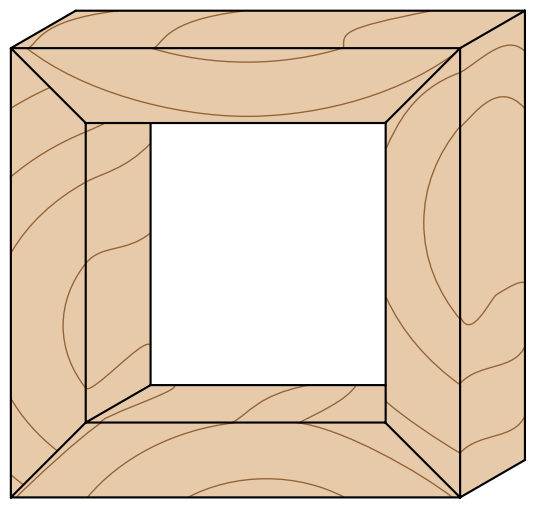
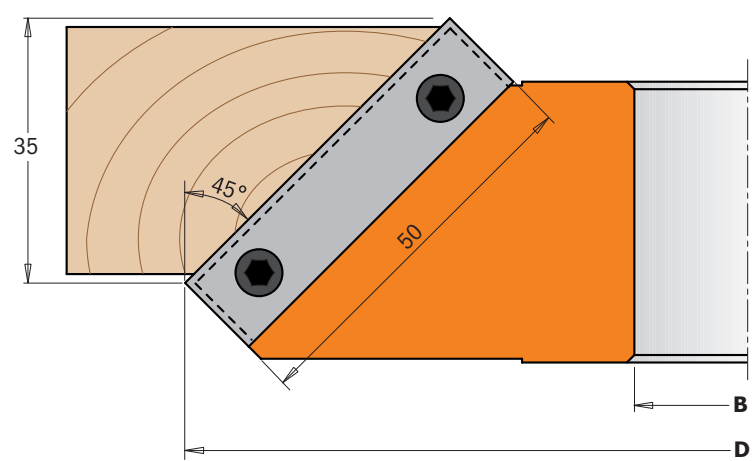
694.002

CMT chamfer cutter heads carry out clean accurate bevels and joints for excellent edge work. For use on spindle moulder machines, double-end tenoner and shaper machines. Perfect on all materials, but ideal on solid wood, veneer, panel and plastic-coated materials.

TECHNICAL DETAILS:

- Hard aluminium alloy body with high resistance to tensile and yield stress.
- 2 HWM Knives 50x12x1,5mm [Z2].
- Tools for manual feed (MAN).
- Pins for the automatic positioning of the knives.

Supplied in a solid plastic box.



D mm	B mm	Z	RPM	ORDER NO.	Spare parts			
150	30	2	5100~8800	694.002.30				
150	31,75	2	5100~8800	694.002.31	790.500.00	695.999.42	990.064.00	991.064.00
150	35	2	5100~8800	694.002.35	790.500.00	695.999.42	990.064.00	991.064.00
150	40	2	5100~8800	694.002.40	790.500.00	695.999.42	990.064.00	991.064.00
160	50	2	4800~8300	694.002.50	790.500.00	695.999.42	990.064.00	991.064.00

Adjustable Chamfer Cutter Heads with Positive Stop



694.018

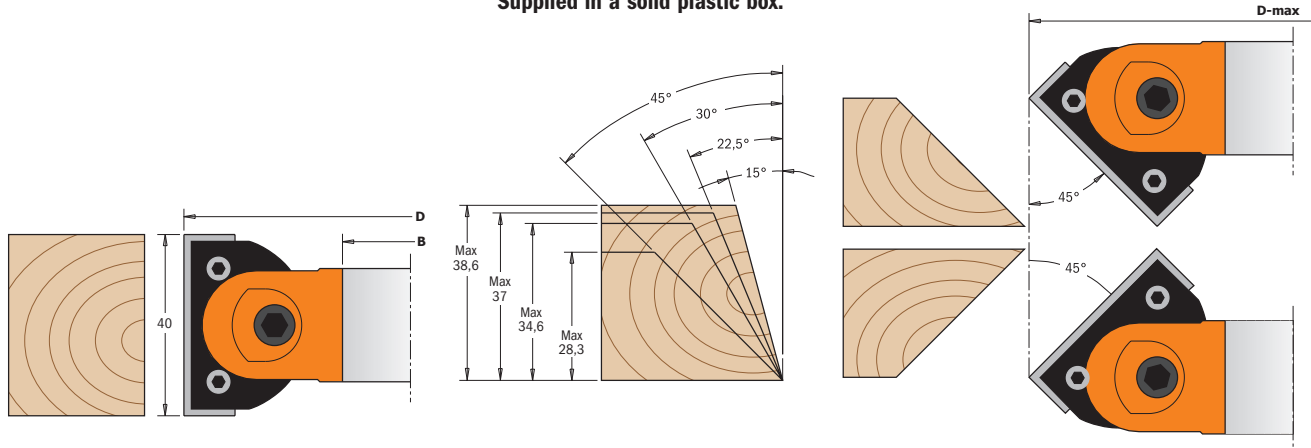


These new adjustable chamfer cutter heads carry out precise cuts, accurate bevels and joints on wooden boards and solid timber. For use on spindle moulder machines, double-end tenoner and shaper machines.

TECHNICAL DETAILS:

- Hard aluminium alloy body with high resistance to tensile and yield stress.
- 2 HWM Knives 40x12x1,5mm [Z2].
- Tools for manual feed (MAN).
- Positive lock hold of HWM knives, swivel bodies infinitely adjustable on both sides from 0 to 45°, with positive stop every 7,5° step, thanks to the special built-in geared mechanism.

Supplied in a solid plastic box.



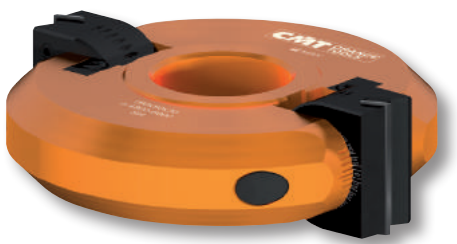
D mm	I mm	B mm	Z	D_Max 45° mm	RPM	ORDER NO.
120	40	30	2	140	7000~9000	694.018.30
120	40	35	2	140	7000~9000	694.018.35
145	40	40	2	165	4800~7200	694.018.40
145	40	50	2	165	4800~7200	694.018.50

Spare parts

Part	Part	Part	Part
695.018.01	790.400.00	990.094.00	991.072.00
695.018.01	790.400.00	990.094.00	991.072.00
695.018.01	790.400.00	990.094.00	991.072.00
695.018.01	790.400.00	990.094.00	991.072.00

Spare parts 991.065.00 5mm hex key

Professional Adjustable Chamfer Cutter Heads with Gear Box



694.017

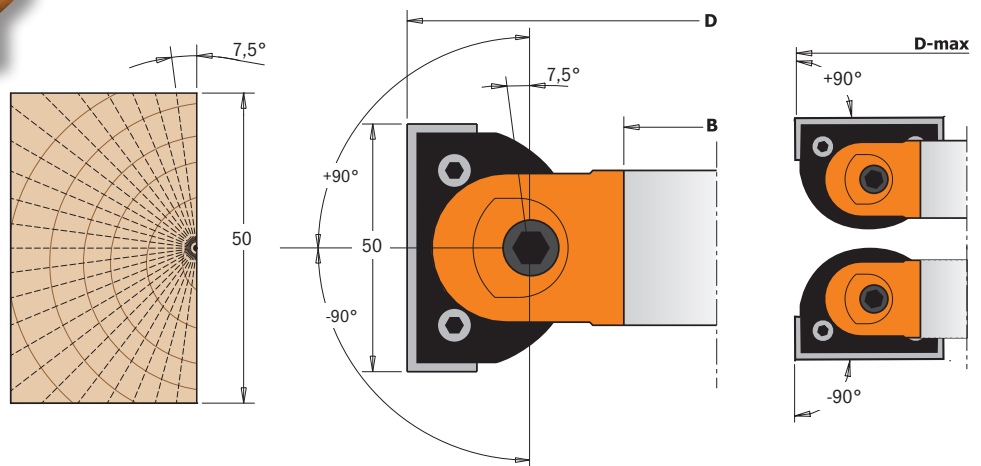


These new professional adjustable chamfer cutter heads carry out precise cuts, accurate bevels and joints on wooden boards and solid timber. For use on spindle moulder machines, double-end tenoner and shaper machines.

TECHNICAL DETAILS:

- Hard aluminium alloy body with high resistance to tensile and yield stress.
- 2 HWM knives (50x12x1,5mm) [Z2].
- Tools for manual feed (MAN).
- Positive lock hold of HWM knives.
- Swivel bodies infinitely adjustable on both sides from +90° to -90°, thanks to the special built-in geared mechanism.

Supplied in a solid plastic box.



D mm	I mm	B mm	Z	D_Max 45° mm	RPM	ORDER NO.
160	50	30	2	183	4800~6000	694.017.30
160	50	35	2	183	4800~6000	694.017.35
160	50	50	2	183	4800~6000	694.017.50

Spare parts

Part	Part	Part	Part	Part
695.017.01	790.500.00	695.999.48	990.106.00	991.067.00
695.017.01	790.500.00	695.999.48	990.106.00	991.067.00
695.017.01	790.500.00	695.999.48	990.106.00	991.067.00

Spare parts 991.081.00 4mm hex key